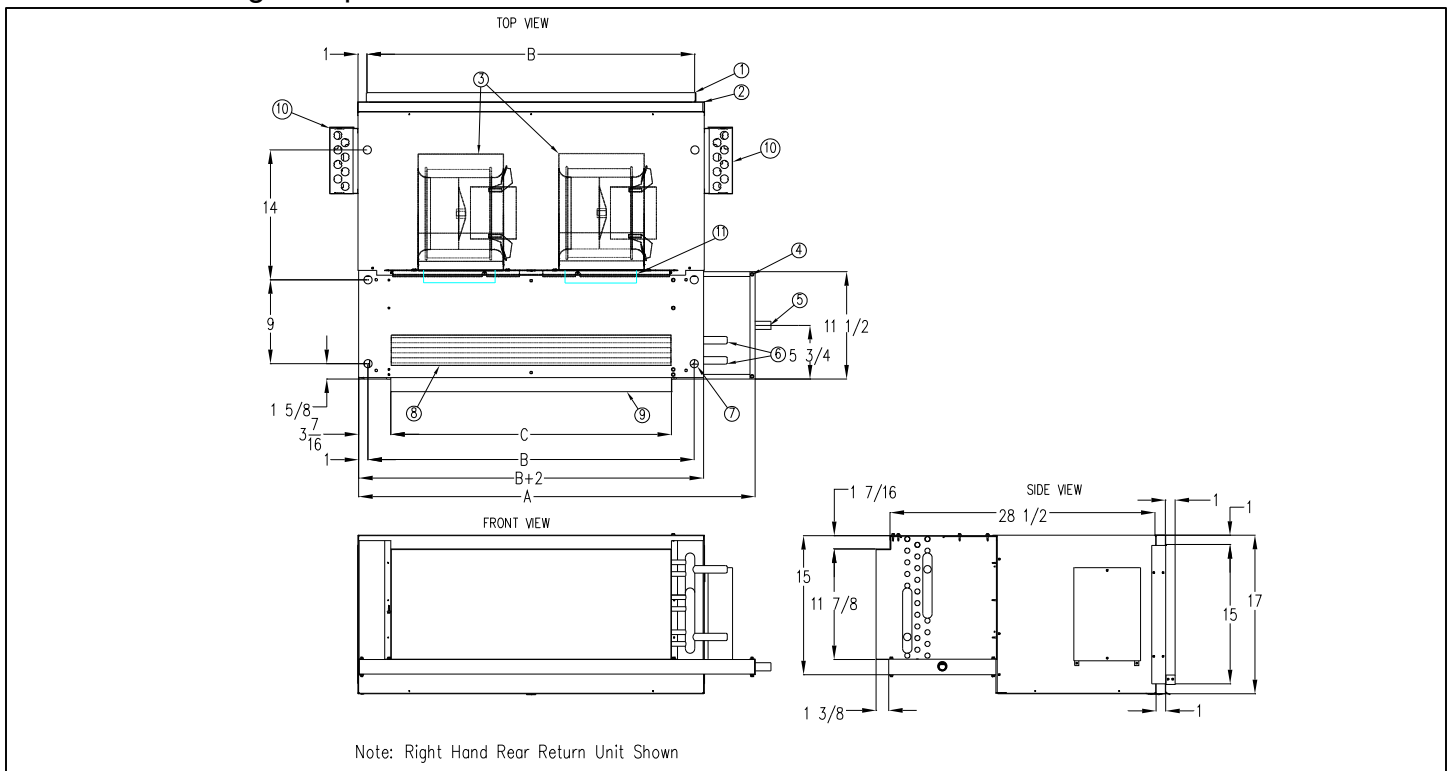


## HHP Fan Coil Unit Horizontal High Output Concealed with Plenum



Model	Dimensions (inches)					Approx. Weight (lb)
	A	B	C	D	Filter	
HHP06	25 1/2	18	13	5/8	20x17x1	81
HHP08	30 1/2	23	18	5/8	25x17x1	94
HHP10	33 1/2	26	21	7/8	28x17x1	106
HHP12	38 1/2	31	26	7/8	33x17x1	117
HHP14	42 1/2	35	30	7/8	37x17x1	154
HHP16	46 1/2	39	34	7/8	41x17x1	175
HHP18	51 1/2	44	39	7/8	46x17x1	195
HHP20	55 1/2	48	43	7/8	50x17x1	212

1. Return air duct collar
  2. Filter (rear return shown)
  3. Blower / motor assembly
  4. Condensate pan
  5. Drain connection - 3/4" MNPT
  6. Chilled water connections (supply and return)  
O.D. = 'D'; Hot water connections = 5/8" O.D.
  7. Mounting holes with rubber grommets
  8. Coil assembly
  9. Supply air duct collar
  10. Control/Electrical Box\*
- \*Control Box may be mounted on either side of unit

### Accessories (Optional)

Check  if provided.

- Motor Quick Disconnect, Rear Return Only
- Thermostat \_\_\_\_\_
- Control Transformer & Fan Relays
- Aquastat Changeover Switch

- Washable Filter
- Unit Disconnect Switch
- Fuse

## Accessories (Optional)

Coil - 1/2" O.D. Copper Tube; 10 Fins/Inch Aluminum, Sine Wave

### 2-Pipe

- 3-Row (STD.)   
  4-Row (STD.)   
  5-Row   
  6-Row

### 4-Pipe (Cooling Rows/Heating Rows)

- 2/1-Row   
  3/1-Row   
  3/2-Row   
  4/1-Row   
  4/2-Row   
  5/1-Row

- Chilled Water Cooling                     
  Hot Water Heating  
 Glycol Cooling                                     
  Glycol Heating

### Motor(s) - 3 speed PSC

Standard  
115V/60Hz/1ph

Model	HP	Total Amps
HHP06	1/4	3.5
HHP08	1/4	3.9
HHP10	1/4	4.1
HHP12	1/3	4.9
HHP14	2 X 1/4	2 X 4.1
HHP16	2 X 1/4	2 X 4.2
HHP18	2 X 1/4	2 X 4.3
HHP20	2 X 1/3	2 X 4.5

### Optional:

- 208V/60Hz/1ph  
 230V/60Hz/1ph  
 277V/60Hz/1ph

### Features:

- Automatic Reset
- Thermal Overload Protection System

### Electric Heat (Single Phase)

#### Heater Voltage

- 115V  
 208V  
 230V  
 277V

		Electric Heater kW Primary or Supplementary			
		115 Volts	208 Volts	230 Volts	277 Volts
Size	Blowers	Min-Max kW	Min-Max kW	Min-Max kW	Min-Max kW
06	1	1-4 kW	1-6 kW	1-6 kW	1-6 kW
08	1	1-4 kW	1-6 kW	1-6 kW	1-6 kW
10	1	1-4 kW	1-6 kW	1-6 kW	1-6 kW
12	1	1-4 kW	1-6 kW	1-6 kW	1-6 kW
14	2	1-4 kW	1-9 kW	1-10 kW	1-10 kW
16	2	1-4 kW	1-9 kW	1-10 kW	1-10 kW
18	2	1-4 kW	1-9 kW	1-10 kW	1-10 kW
20	2	1-4 kW	1-9 kW	1-10 kW	1-10 kW

<b>Condensate Pan</b> <input type="checkbox"/> Galvanized (STD.) <input type="checkbox"/> Safety Overflow Float Switch* <input type="checkbox"/> Safety (Two) Drain Connection <input type="checkbox"/> Extension Plate <input type="checkbox"/> Mastic Coating <input type="checkbox"/> Stainless Steel Inner Layer		Description: Inner and Outer Layer of 18 gauge Galvanized Sheet Metal with One - Inch Internal Insulation
*24V, requires transformer and fan relay if not obtained with a 24V thermostat.		

<b>Valves and Valve Accessories</b> <input type="checkbox"/> Shut - Off Valve(s) <input type="checkbox"/> Strainer(s) <input type="checkbox"/> Shut - Off Valve w/ Memory Stop <input type="checkbox"/> Manual Flow Control Valve(s) <input type="checkbox"/> 2 - Way Motorized Valve <input type="checkbox"/> Automatic Flow Control Valve(s) <input type="checkbox"/> 3 - Way Motorized Valve <input type="checkbox"/> Unions <input type="checkbox"/> 2 - Way Modulating Valve <input type="checkbox"/> Pete's Plug(s)	
--	--

## General Description

- This horizontal discharge fan coil unit is designed for concealed installations where a return air plenum and ducted air system are required. Typical applications are above closets, hallways, or bathrooms in hotels, motels, condominiums and commercial buildings.
- Exterior fabricated of 18 gauge galvanized steel with 1/2" matte-faced liner for maximum thermal and acoustical insulation.
- Removable motor/blower assembly.
- Throwaway filter.
- Manual Air Vent.
- System charged with air to insure a leak free arrival at the job site.
- Plenum designed for bottom or rear return and provided with filter clips (required on bottom return), horizontal filter slide or vertical filter slide.

This submittal is meant to demonstrate general dimensions of this product. The drawings are not meant to detail every aspect of the product. Drawings are not to scale. Titus reserves the right to make changes without written notice.



605 Shiloh Road • Plano, Texas 75074 • 972-212-4800